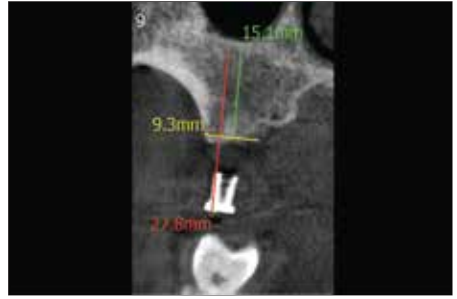


## ► Instruction of Use for Silicone Drill Stoppers



1. Place the template into the oral cavity and take a pre-operative CT Scan.



2. On the scan image, measure the distance from the height of titanium sleeve to the intended depth of drilling (red line on image).



3. Measure and trim a silicone stopper to the appropriate length.



4. Insert the trimmed silicone stopper over the pilot drill. **IMPORTANT: Make sure the stopper is seated all the way onto the handpiece head to prevent push-back during surgery.**



5. Measure and confirm drill depth of the pilot drill with stopper.



5. Expose and prepare the osseous site with the pilot drill using the template as a guide for angulations and depth.